



ELEMENTE CLEMENTE

SPRING SUMMER 2026



# INDEX



INTRODUCTION .....	4	S1174 VOILE DE COTON VIVID LINES DIGITAL PRINT .....	31
S1170 LIGHT LINEN DENIM STRIPES DIGITAL PRINT .....	6	S1165 SEERSUCKER STRIPE .....	32
S1179 ULTRA LIGHT LINEN .....	8	S1166 VISCOSE TONE-ON-TONE STRIPES .....	34
S055 SUPER LIGHT LINEN .....	10	S1167 STRUCTURED VISCOSE .....	35
BASICS SUPER LIGHT LINEN .....	14	S1176 STRUCTURED VISCOSE DIP DYES .....	38
S123 LIGHT LINEN .....	16	S1168 STRUCTURED VISCOSE FLORAL CUT PRINT .....	39
BASICS S123 LIGHT LINEN .....	20	S1169 VISCOSE AQUARELL PRINT .....	42
S1180 LINEN DIP DYE .....	22	S1054 ORGANIC COTTON JERSEY .....	44
S1063 LIGHT LINEN DENIM DIGITAL PRINT .....	24	S1164 ORGANIC COTTON JERSEY MELANGE .....	45
S1178 LIGHT LINEN DENIM PATCHES DIGITAL PRINT .....	26	S1177 LINEN JERSEY .....	46
S1103 LIGHT LINEN DENIM PATCHWORK PRINT (UPCYCLING) .....	27	S1181 LINEN JERSEY DIP DYE .....	46
S1172 HEAVY LINEN DENIM DIGITAL PRINT .....	28	ACCESSORIES .....	47
S682B ORGANIC COTTON STRETCH RIBBED .....	29	OUR FASHION ICONS .....	47
S983 ORGANIC POPELINE STRETCH .....	30	SHOWS .....	48
S1099 ORGANIC POPELINE INK FLOWER PRINT UPCYCLING .....	30	SALES AGENTS .....	48

## SIZE TABLE

	0	1	2	3	4	5	6
EC	0	I		II		III	
D	34	36/38	40	42/44	46	48	50/52
FR	36	38/40	42	44/46	48	50	52
UK	8	10	12	14	16	18	20
US	4	6/8	10	12/14	16	18	20



## EUPHORIA OF LINES ELEMENTE CLEMENTE SS2026 COLLECTION

With Euphoria of Lines, we celebrate the quiet beauty of structure – the subtle joy of form, movement, and flow. This collection explores contrasts: between clarity and softness, between architectural cuts and fluid fabrics. Lines appear as broken stripes (Vivid Lines), and take new shape in the bold floral silhouettes of Floral Cut – graphic yet organic. Generous, open silhouettes offer space – for movement, for breath, for presence.

A palette of Spring Fern, Raspberry, Glacier, and Deep Teal brings a sense of summer that is both fresh and grounded. Natural materials like linen and cotton voile add texture you can feel – light, tactile, responsible. Each piece is made with care and longevity in mind, offering an alternative to fast, fleeting fashion.

This collection doesn't shout – it resonates. Euphoria of Lines is not a trend, but a state of being: calm, clear, and deeply connected.

  
elemente  
**Clemente**  
SUSTAINABLE SINCE 2010



**Dress KARABY** C16D 437 1170  
0 1 2 3 4 5  
4907 denim/undyed

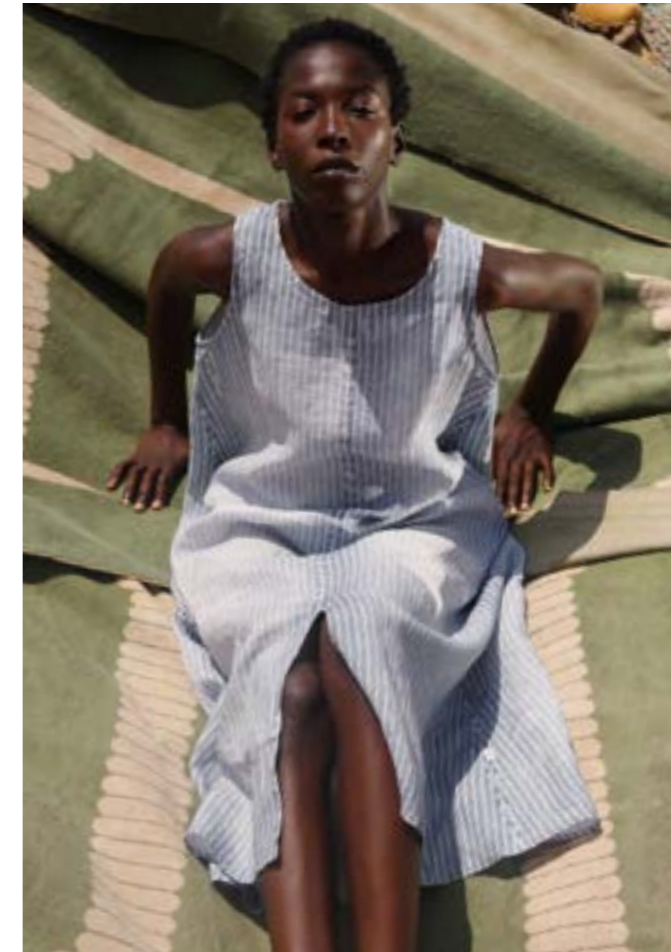
**S1170 LIGHT LINEN DENIM STRIPES DIGITAL PRINT**

100% European Linen | Digital Print on S123 Light Linen

**Pants GEISHAN LONG**  
C16D 250 1170  
0 1 2 3 4 5  
4907 denim/undyed



**Pants RUNDU**  
C16D 210 1170  
0 1 2 3 4 5  
4907 denim/undyed



**Dress OWO** C16D 415 1170  
0 1 2 3 4 5  
4907 denim/undyed

**LINEN**

100% eco-friendly Linen from environmentally sustainable agriculture in Europe  
in manufacturing 90% water saved versus cotton

**COLOURS**

4907 denim/undyed

## S1179 ULTRA LIGHT LINEN

100% European Linen

### LINEN

100% eco-friendly Linen from environmentally sustainable agriculture in Europe

in manufacturing 90% water saved versus cotton

### COLOURS

- 01 white
- 02 dark night
- 07 undyed
- 09 sand
- 14 rosebud
- 29 alga
- 35 spring fern
- 39 thyme
- 40 glacier
- 59 raspberry
- 68 deep teal
- 81 kiwi
- 99 black



#### Top ATHEN

C16D 687 1179

0 1 2 3 4 5

40 glacier



## S1179 ULTRA LIGHT LINEN

100% European Linen

### LINEN

100% eco-friendly Linen from environmentally sustainable agriculture in Europe

in manufacturing 90% water saved versus cotton

### COLOURS

- 01 white
- 02 dark night
- 07 undyed
- 09 sand
- 14 rosebud
- 29 alga
- 35 spring fern
- 39 thyme
- 40 glacier
- 59 raspberry
- 68 deep teal
- 81 kiwi
- 99 black



#### Blouse EARTH

C16D 151 1179

0 I II III

07 undyed





**Top HAMARE** C16D 656 055  
 0 I II III  
 35 spring fern

**S055 SUPER LIGHT LINEN**

100% European Linen | 2nd Fabric: S900 – 92% Organic Cotton 8% Elastane

**LINEN**

100% eco-friendly Linen from environmentally sustainable agriculture in Europe  
 in manufacturing 90% water saved versus cotton

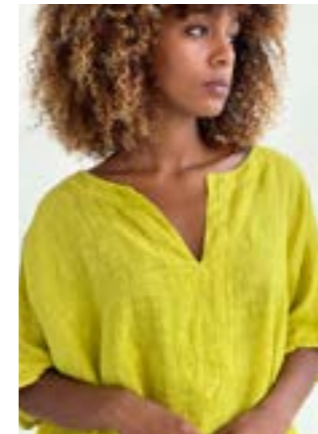
**COLOURS**

- 01 white
- 02 dark night
- 07 undyed
- 09 sand
- 14 rosebud
- 29 alga
- 35 spring fern
- 39 thyme
- 40 glacier
- 59 raspberry
- 68 deep teal
- 81 kiwi
- 99 black



**Tunic LEHAN**

C16D 680 055  
 0 1 2 3 4 5 6  
 09 sand



**Shirt KUMIAR**

C16D 604 055  
 0 I II III IV  
 81 kiwi



**Shirt DIVUN**

C16D 631 055  
 0 I II III  
 01 white

## S055 SUPER LIGHT LINEN

100% European Linen | 2nd Fabric: S900 – 92% Organic Cotton 8% Elastane

### LINEN

100% eco-friendly Linen from environmentally sustainable agriculture in Europe

in manufacturing 90% water saved versus cotton

### COLOURS

- 01 white
- 02 dark night
- 07 undyed
- 09 sand
- 14 rosebud
- 29 alga
- 35 spring fern
- 39 thyme
- 40 glacier
- 59 raspberry
- 68 deep teal
- 81 kiwi
- 99 black



### Pants MAKI

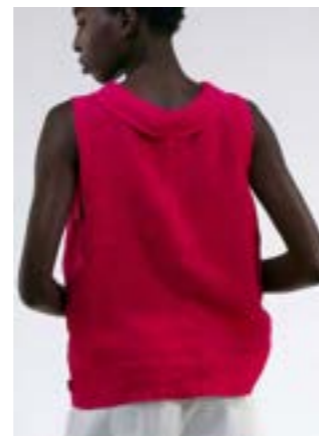
C16D 296 055

- 0 1 2 3 4 5
- 40 glacier

### Top SIHLA

C16D 677 055

- 0 1 2 3 4 5
- 59 raspberry



### Scarf KIGALI

C16AD 30 055

OS



## BASICS S055 SUPER LIGHT LINEN

100% European Linen | 2nd Fabric: S900 – 92% Organic Cotton 8% Elastane

### LINEN

100% eco-friendly Linen from environmentally sustainable agriculture in Europe

in manufacturing 90% water saved versus cotton

### COLOURS

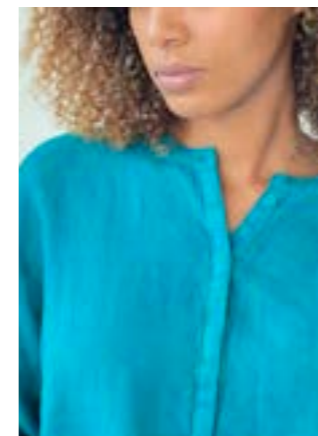
- 01 white
- 02 dark night
- 07 undyed
- 09 sand
- 14 rosebud
- 29 alga
- 35 spring fern
- 39 thyme
- 40 glacier
- 59 raspberry
- 68 deep teal
- 81 kiwi
- 99 black



### Blouse TEGE

C16D 134 055

- 0 I II III IV
- 35 spring fern



### Blouse BISSAU

C16D 127 055

- 0 1 2 3 4 5
- 68 deep teal

## BASICS S055 SUPER LIGHT LINEN

100% European Linen | 2nd Fabric: S900 – 92% Organic Cotton 8% Elastane

### LINEN

100% eco-friendly Linen from environmentally sustainable agriculture in Europe

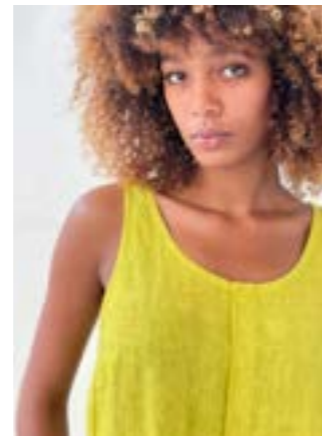
in manufacturing 90% water saved versus cotton

### COLOURS

- 01 white
- 02 dark night
- 07 undyed
- 09 sand
- 14 rosebud
- 29 alga
- 35 spring fern
- 39 thyme
- 40 glacier
- 59 raspberry
- 68 deep teal
- 81 kiwi
- 99 black



**Shirt VARI**  
C16D 642 055  
0 I II III IV  
07 undyed



**Top SOYO**  
C16D 693 055  
0 1 2 3 4 5  
81 kiwi



**Blouse IGOTA**  
C16D 161 055  
0 I II III  
99 black



**Shirt BRAGA**  
C16D 685 055  
0 1 2 3 4 5 6  
39 thyme  
2nd Fabric: Jersey S900





**Coat ZEDA**  
 C16D 595 123  
 0 1 2 3 4 5  
 07 undyed

**S123 LIGHT LINEN**

100% European Linen

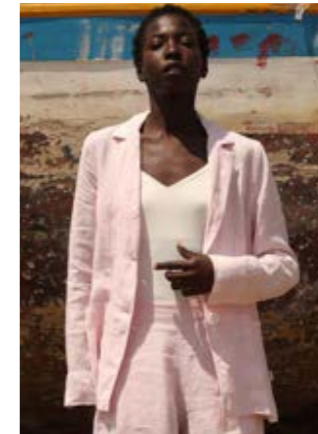
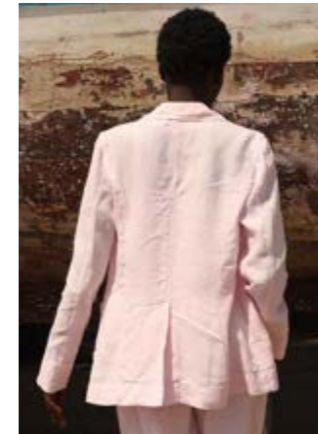
**LINEN**

100% eco-friendly Linen from environmentally sustainable agriculture in Europe  
 in manufacturing 90% water saved versus cotton

**COLOURS**

- 01 white
- 02 dark night
- 07 undyed
- 14 rosebud
- 29 alga
- 35 spring fern
- 39 thyme
- 40 glacier
- 59 raspberry
- 68 deep teal
- 81 kiwi
- 99 black

**Blazer BANGUI**  
 C16D 380 123  
 0 1 2 3 4 5  
 14 rosebud



**Jacket NAIPUN**  
 C16D 311 123  
 0 1 2 3 4 5  
 40 glacier



**Dress DUALI**  
 C16D 494 123  
 0 I II III  
 39 thyme



**Coat ZEDA**  
 C16D 595 123  
 0 1 2 3 4 5  
 07 undyed



## S123 LIGHT LINEN

100% European Linen

### LINEN

100% eco-friendly Linen from environmentally sustainable agriculture in Europe

in manufacturing **90% water saved** versus cotton

### COLOURS

- 01 white
- 02 dark night
- 07 undyed
- 14 rosebud
- 29 alga
- 35 spring fern
- 39 thyme
- 40 glacier
- 59 raspberry
- 68 deep teal
- 81 kiwi
- 99 black



### Pants MAKITA

C16D 288 123

0 1 2 3 4 5

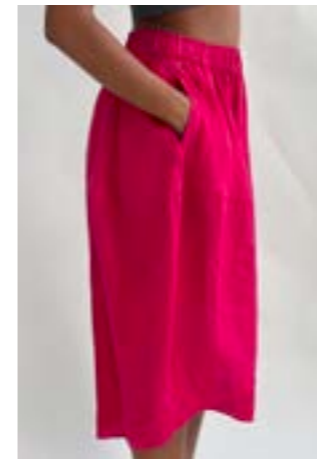
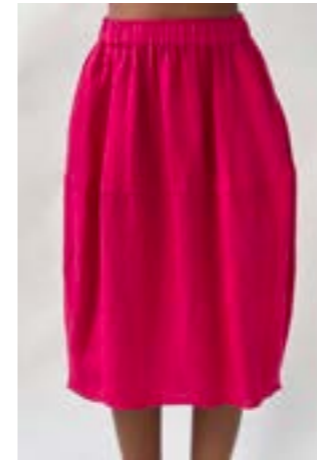
01 white

### Pants MALI TIED

C16D 279 123

0 1 2 3 4 5

01 white



### Skirt KENBA

C16D 764 123

0 1 2 3 4 5

59 raspberry



### Bag NAILE

C16AD 56 123

OS

29 alga

## S123 LIGHT LINEN

100% European Linen

### LINEN

100% eco-friendly Linen from environmentally sustainable agriculture in Europe

in manufacturing **90% water saved** versus cotton

### COLOURS

- 01 white
- 02 dark night
- 07 undyed
- 14 rosebud
- 29 alga
- 35 spring fern
- 39 thyme
- 40 glacier
- 59 raspberry
- 68 deep teal
- 81 kiwi
- 99 black

### Pants SOPA

C16D 270 123

0 1 2 3 4 5

29 alga

## BASICS S123 LIGHT LINEN

100% European Linen

### LINEN

100% eco-friendly Linen from environmentally sustainable agriculture in Europe

in manufacturing 90% water saved versus cotton

### COLOURS

- 01 white
- 02 dark night
- 07 undyed
- 09 sand
- 14 rosebud
- 29 alga
- 35 spring fern
- 39 thyme
- 40 glacier
- 59 raspberry
- 68 deep teal
- 81 kiwi
- 99 black



**Dress FULA**  
C16D 408 123  
0 1 2 3 4 5 6  
01 white



**Shirt DIVA**  
C16D 605 123  
0 I II III  
68 deep teal



**Dress OWO**  
C16D 415 123  
0 1 2 3 4 5 6  
81 kiwi



**Jacket RANEA**  
C16D 370 123  
0 1 2 3 4 5  
02 dark night



**Dress ZARIS**  
C16D 413 123  
0 1 2 3 4 5  
99 black



**Pants GEISHA**  
C16D 228 123  
0 1 2 3 4 5 6  
01 white

## BASICS S123 LIGHT LINEN

100% European Linen

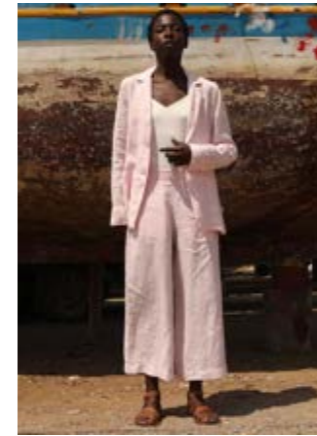
### LINEN

100% eco-friendly Linen from environmentally sustainable agriculture in Europe

in manufacturing 90% water saved versus cotton

### COLOURS

- 01 white
- 02 dark night
- 07 undyed
- 09 sand
- 14 rosebud
- 29 alga
- 35 spring fern
- 39 thyme
- 40 glacier
- 59 raspberry
- 68 deep teal
- 81 kiwi
- 99 black



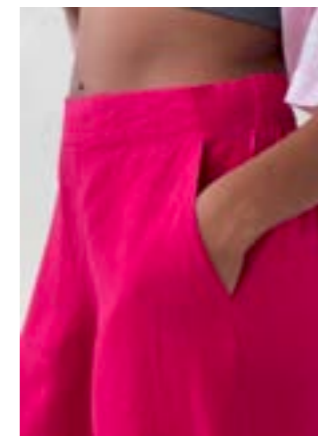
**Pants SKARA**  
C16D 223 123  
0 1 2 3 4 5 6  
14 rosebud | 01 white



**Pants RUNDU**  
C16D 210 123  
0 1 2 3 4 5  
35 spring fern



**Pants IDO**  
C16D 290 123  
0 1 2 3 4 5  
59 raspberry





**Blouse IGOTA**  
 C16D 161 1180  
 0 I II III IV  
 0739 undyed/thyme  
 Super Light Linen S055

**S1180 LIGHT LINEN DIP DYE**

100% European Linen



**Blouse IGOTA**  
 C16D 161 1180  
 0 I II III IV  
 0739 undyed/thyme  
 Super Light Linen S055

**LINEN**

100% eco-friendly Linen from environmentally sustainable agriculture in Europe

in manufacturing **90% water saved** versus cotton

**COLOURS**

- 0714 undyed/rosebud
- 0739 undyed/thyme
- 0740 undyed/glacier



**Blouse TEGE**  
 C16D 134 1180  
 0 I II III IV  
 0714 undyed/rosebud  
 Super Light Linen S055



## S1063 LIGHT LINEN DENIM DIGITAL PRINT

100% European Linen | Digital Print on S123 Light Linen

### LINEN

100% eco-friendly Linen from environmentally sustainable agriculture in Europe  
in manufacturing 90% water saved versus cotton

### COLOURS

43 light denim  
49 blue denim



#### Jacket NAIPUN

C16D311 1063

0 1 2 3 4 5  
49 blue denim



#### Blouse TEGE

C16D 134 1063

0 I II III  
43 light denim

## S1063 LIGHT LINEN DENIM DIGITAL PRINT

100% European Linen | Digital Print on S123 Light Linen

### LINEN

100% eco-friendly Linen from environmentally sustainable agriculture in Europe  
in manufacturing 90% water saved versus cotton

### COLOURS

43 light denim  
49 blue denim



#### Pants RUNDU

C16D210 1063

0 1 2 3 4 5  
49 blue denim



#### Pants SIPA

C16D225 1063

0 1 2 3 4 5  
49 blue denim

#### Pants RUNDU UP

C16D271 1063

0 1 2 3 4 5  
49 blue denim



## S1178 LIGHT LINEN DENIM PATCHES DIGITAL PRINT

100% European Linen | Digital Print on S123 Light Linen

### LINEN

100% eco-friendly Linen from environmentally sustainable agriculture in Europe  
in manufacturing 90% water saved versus cotton

### COLOURS

47 patch blue



#### Blouse KABO

C16D 121 1178

0 I II III

47 patch blue



#### Pants MAKITA

C16D 288 1178

0 1 2 3 4 5

47 patch blue



#### Pants AMONI

C16D 291 1178

0 1 2 3 4 5

47 patch blue

## S1103 LIGHT LINEN DENIM PATCHWORK PRINT UPCYCLING

100% European Linen | Digital Print on S123 Light Linen

### LINEN

100% eco-friendly Linen from environmentally sustainable agriculture in Europe  
in manufacturing 90% water saved versus cotton

### COLOURS

96 stone



#### Bag NAILE

C16AD 56 1103

OS

96 stone



#### Hat KILOLI

C16AD 49 1103

1 2 3

96 stone

## S1172 HEAVY LINEN DENIM DIGITAL PRINT

100% European Linen | Digital Print on S114 Heavy Linen

### LINEN

100% eco-friendly Linen from environmentally sustainable agriculture in Europe in manufacturing 90% water saved versus cotton

### COLOURS

50 light jeans



#### Coat ALVARA

C16D 508 1172

0 1 2 3 4 5

50 light jeans



## S682B ORGANIC COTTON STRETCH RIBBED

97% Organic Cotton 3% Elastane

### ORGANIC COTTON

Organic cotton produced 100% ecological, low-pollutant no use of harmful pesticides less water consumption in comparison to normal cotton

### COLOURS

- 01 white
- 02 dark night
- 29 alga
- 35 spring fern
- 39 thyme
- 68 deep teal
- 81 kiwi
- 99 black

#### Pants TAYLA

C16D 220 682B

0 1 2 3 4 5

01 white



#### Pants IDO

C16D 290 682B

0 1 2 3 4 5

81 kiwi



#### Pants GEISHA

C16D 228 682B

0 1 2 3 4 5

68 deep teal

## S983 ORGANIC POPELINE STRETCH

97% Organic Cotton 3% Elastane

### ORGANIC COTTON

Organic cotton produced  
100% ecological, low-pollutant  
no use of harmful pesticides  
less water consumption in  
comparison to normal cotton

### COLOURS

- 01 white
- 02 dark night
- 14 rosebud
- 35 spring fern
- 39 thyme
- 40 glacier
- 59 raspberry
- 68 deep teal
- 81 kiwi
- 99 black



### Blouse LAO

C16D 133 983

0 1 2 3 4 5

01 white

### Dress OYULE

C16D 462 983

0 1 2 3 4 5

68 deep teal

### Blouse OVRA

C16D 129 983

0 I II III

40 glacier

## S1099 ORGANIC POPELINE INK FLOWER PRINT UPCYCLING

97% Organic Cotton 3% Elastane | Print on S983 Organic Popeline Stretch

### ORGANIC COTTON

Organic cotton produced  
100% ecological, low-pollutant  
no use of harmful pesticides  
less water consumption in  
comparison to normal cotton

### COLOURS

- 4507 saphir



### Top RANA

C16D 688 1099

0 1 2 3 4 5

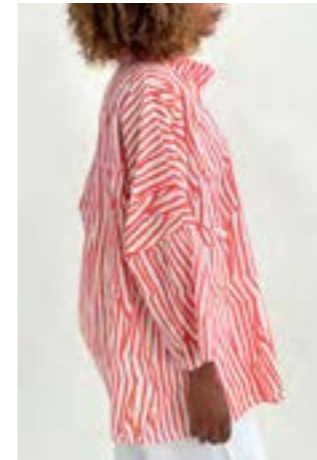
4507 saphir

## S1174 VOILE DE COTON VIVID LINES DIGITAL PRINT

100% Cotton

### COLOURS

- 0207 dark night
- 2307 orange
- 4007 glacier

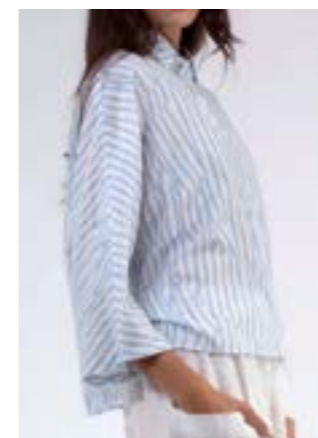


### Blouse GORO

C16D 113 1174

0 I II III

2307 orange



### Blouse TEGE

C16D 134 1174

0 I II III IV

4007 glacier



### Dress GUMARE

C16D 481 1174

0 I II III

0207 dark night



**Jacket RANEA**  
 C16D 370 1165  
 0 1 2 3 4 5  
 0507 beige/undyed

**S1165 SEERSUCKER STRIPE**

43% Viscose 41% Cotton (recycled) 15% Polyester (recycled) 1% Elastane

**COLOURS**

0507 beige/undyed  
 4807 blue/undyed  
 9807 anthra/undyed

**Shirt VARI**

C16D 642 1165  
 0 I II III  
 4807 blue/undyed



**Pants GEISHA**

C16D 228 1165  
 0 1 2 3 4 5  
 9807 anthra/undyed



**Pants SIPA**

C16D 225 1165  
 0 1 2 3 4 5  
 0507 beige/undyed



**Pants MALI TIED**

C16D 279 1165  
 0 1 2 3 4 5  
 4807 blue/undyed

## S1166 VISCOSE TONE-ON-TONE STRIPES

80% Viscose (EcoVero™) 20% Polyamide | 2nd Fabric: S900 – 92% Organic Cotton 8% Elastane

### COLOURS

- 02 dark night
- 07 undyed
- 14 rosebud
- 29 alga
- 35 spring fern
- 39 thyme
- 40 glacier
- 59 raspberry
- 68 deep teal
- 81 kiwi
- 99 black



**Dress DUALI**  
C16D 494 1166  
0 I II III  
14 rosebud



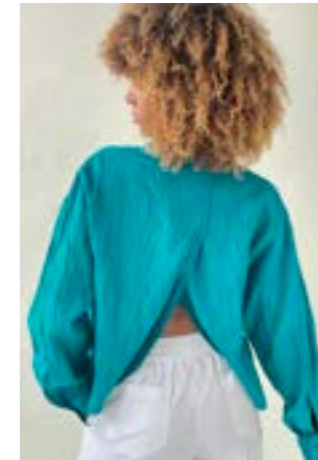
**Blouse TEGE**  
C16D 134 1166  
0 I II III  
07 undyed

## S1167 STRUCTURED VISCOSE

87% Viscose (EcoVero™) 13% Polyamide (recycled)

### COLOURS

- 02 dark night
- 07 undyed
- 14 rosebud
- 29 alga
- 35 spring fern
- 39 thyme
- 40 glacier
- 59 raspberry
- 68 deep teal
- 81 kiwi
- 99 black



**Blouse BAMBARI**  
C16D 125 1167  
0 1 2 3 4 5  
68 deep teal

**Dress YAONA**  
C16D 496 1167  
0 1 2 3 4 5  
81 kiwi



**Dress ZARIS**  
C16D 413 1167  
0 1 2 3 4 5  
59 raspberry



**Dress BALBA**  
C16D 451 1167  
0 1 2 3 4 5  
Without picture – same style as  
in fabric 1169, page 42

**Blouse TEGE**  
C16D 134 1167  
0 I II III  
Without picture – same style as  
in fabric 1168, page 41

**S1167 STRUCTURED VISCOSE**

87% Viscose (EcoVero™) 13% Polyamide (recycled)

**COLOURS**

- 02 dark night
- 07 undyed
- 14 rosebud
- 29 alga
- 35 spring fern
- 39 thyme
- 40 glacier
- 59 raspberry
- 68 deep teal
- 81 kiwi
- 99 black

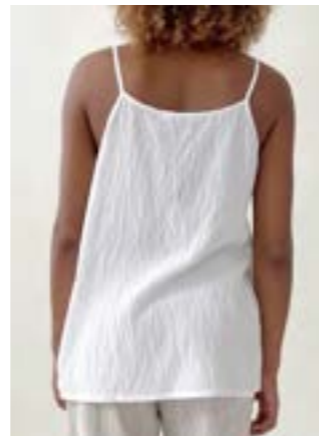
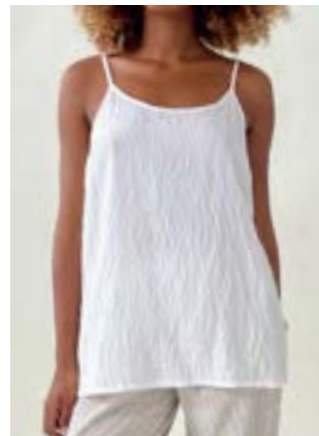
**Shirt KUMIAR**

C16D 604 1167  
0 I II III IV  
14 rosebud



**Top HAMARE**

C16D 656 1167  
0 1 2 3 4 5  
14 rosebud



**Top DOBA**

C16D 633 1167  
0 1 2 3 4 5  
07 undyed

**Pants LUBAO**

C16D 633 1167  
0 1 2 3 4 5  
07 undyed

**S1167 STRUCTURED VISCOSE**

87% Viscose (EcoVero™) 13% Polyamide (recycled)

**COLOURS**

- 02 dark night
- 07 undyed
- 14 rosebud
- 29 alga
- 35 spring fern
- 39 thyme
- 40 glacier
- 59 raspberry
- 68 deep teal
- 81 kiwi
- 99 black



**Pants MIBAS**

C16D 221 1167  
0 1 2 3 4 5  
35 spring fern



**Pants MAKITA**

C16D 288 1167  
0 1 2 3 4 5  
81 kiwi



**Pants MAKI**

C16D 296 1167  
0 1 2 3 4 5  
Without picture – same style as in fabric 1169, page 43

**S1176 STRUCTURED VISCOSE DIP DYE**

87% Viscose (EcoVero™) 13% Polyamide (recycled)

**COLOURS**

1439 rosebud/thyme



**Caftan NURA**

UID 493 1176

1 2

1439 rosebud/thyme



**S1168 STRUCTURED VISCOSE FLORAL CUT PRINT**

87% Viscose (EcoVero™) 13% Polyamide (recycled)

**COLOURS**

4607 navy  
2307 orange  
5907 raspberry  
9907 black



**Dress IRINGAL**

C16D 489 1168

0 1 2 3 4 5

9907 black





**Hat KILOLI**  
C16AD 49 1168  
1 2 3  
2307 orange

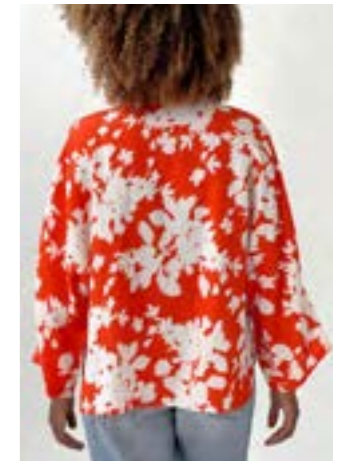
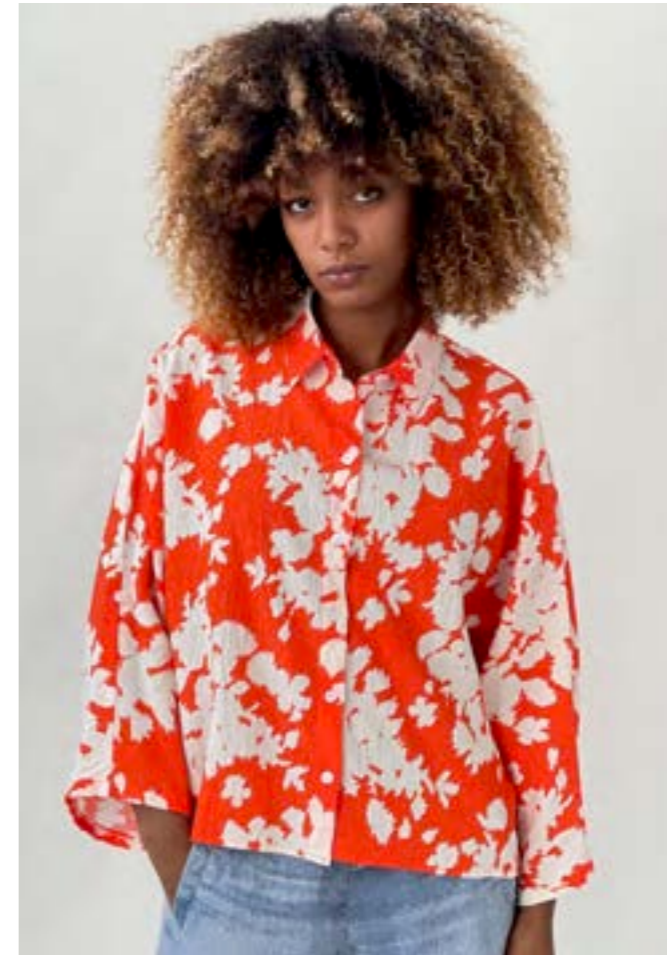
**Top HAMARE**  
C16D 656 1168  
0 1 2 3 4 5  
5907 raspberry

**Pants MAKI**  
C16D 656 1168  
0 1 2 3 4 5  
2307 orange

**S1168 STRUCTURED VISCOSE FLORAL CUT PRINT**

87% Viscose (EcoVero™) 13% Polyamide (recycled)

**Blouse TEGE**  
C16D 134 1168  
0 I II III IV  
2307 orange



**COLOURS**

- 4607 navy
- 2307 orange
- 5907 raspberry
- 9907 black



**Dress KATI**  
C16D 435 1168  
0 I II III  
9907 black

**Dress BALBA**

C16D 451 1168  
1 2

Without picture – same style as  
in fabric 1169, page 42

## S1169 VISCOSE AQUARELL PRINT

86% Viscose (EcoVero™) 14% Polyamide (recycled)

### COLOURS

4162 blubell/red  
9007 carbon/undyed



#### Dress BALBA

C16D 451 1169

1 2

9007 carbon/undyed

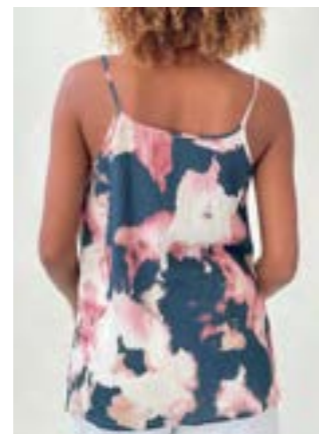
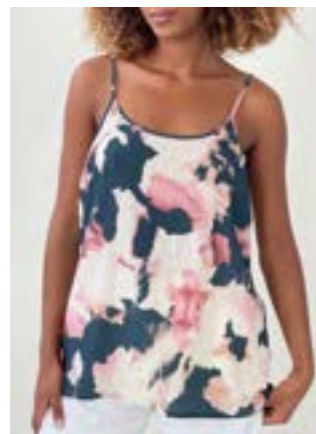


#### Top DOBA

C16D 633 1169

0 1 2 3 4 5

9007 carbon/undyed



## S1169 VISCOSE AQUARELL PRINT

86% Viscose (EcoVero™) 14% Polyamide (recycled)

### COLOURS

4162 blubell/red  
9007 carbon/undyed



#### Pants MAKI

C16D 296 1169

0 1 2 3 4 5

9007 carbon/undyed



#### Pants MAKITA

C16D 288 1169

0 1 2 3 4 5

Without picture – same style as  
in fabric 1167, page 37

#### Blouse TEGE

C16D 134 1169

0 I II III IV

Without picture – same style as  
in fabric 1168, page 41

## S1054 ORGANIC COTTON JERSEY

100% Organic Cotton

### ORGANIC COTTON

Organic cotton produced  
100% ecological, low-pollutant  
no use of harmful pesticides  
less water consumption in  
comparison to normal cotton



#### Shirt TOFAN

C16D 622 1054

0 1 2 3 4 5

07 undyed

#### COLOURS

01 white  
07 undyed  
99 black



#### Shirt ELENA

U1D 681 1054

0 1 2 3 4 5 6

01 white

#### COLOURS

01 white  
02 midnight  
07 undyed  
99 black



#### Shirt TOPE

C16D 679 1054

0 1 2 3 4 5

0114 white/rosebud

#### COLOURS

0114 white/rosebud  
0140 white/glacier

#### Top NINA

U1D 682 1054

0 1 2 3 4 5 6

07 undyed

#### COLOURS

01 white  
02 midnight  
07 undyed  
99 black



## S1164 ORGANIC COTTON JERSEY MELANGE

100% Organic Cotton

### ORGANIC COTTON

Organic cotton produced  
100% ecological, low-pollutant  
no use of harmful pesticides  
less water consumption in  
comparison to normal cotton

#### COLOURS

93 grey melange



#### Shirt YULIHA

U1D 644 1164

0 1 2 3 4 5 6

93 grey melange



#### Shirt ELENA

U1D 681 1164

0 1 2 3 4 5 6

93 grey melange

## S1177 LINEN JERSEY

100% European Linen

### LINEN

100% eco-friendly Linen from environmentally sustainable agriculture in Europe

in manufacturing 90% water saved versus cotton

### COLOURS

- 01 white
- 02 dark night
- 07 undyed
- 14 rosebud
- 35 spring fern
- 39 thyme
- 40 glacier
- 59 raspberry
- 68 deep teal
- 81 kiwi
- 99 black

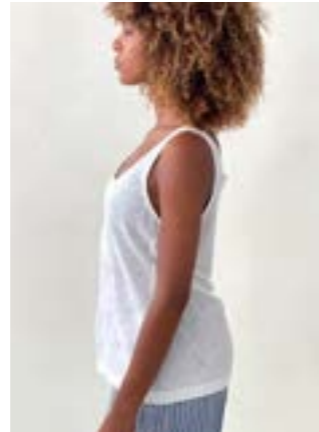


### Shirt TOFU

C16D 684 1177

0 1 2 3 4 5

35 spring fern



### Top IHU

C16D 667 1177

0 1 2 3 4 5

07 undyed

## S1181 LINEN JERSEY DIP DYE

100% European Linen

### LINEN

100% eco-friendly Linen from environmentally sustainable agriculture in Europe

in manufacturing 90% water saved versus cotton

### COLOURS

- 0240 night/glacier
- 1459 rosebud/berry



### Shirt TOFO

C16D 684 1181

0 1 2 3 4 5

top: 1459 rosebud/berry

left: 0240 night/glacier

## ACCESSORIES

Upcycling

### LINEN

100% eco-friendly Linen from environmentally sustainable agriculture in Europe

in manufacturing 90% water saved versus cotton

### COLOURS

- 23 arancia
- 43 light denim
- 49 denim
- 63 apricot
- 76 terracotta

### Scarf DEGE

C16AD 22 081

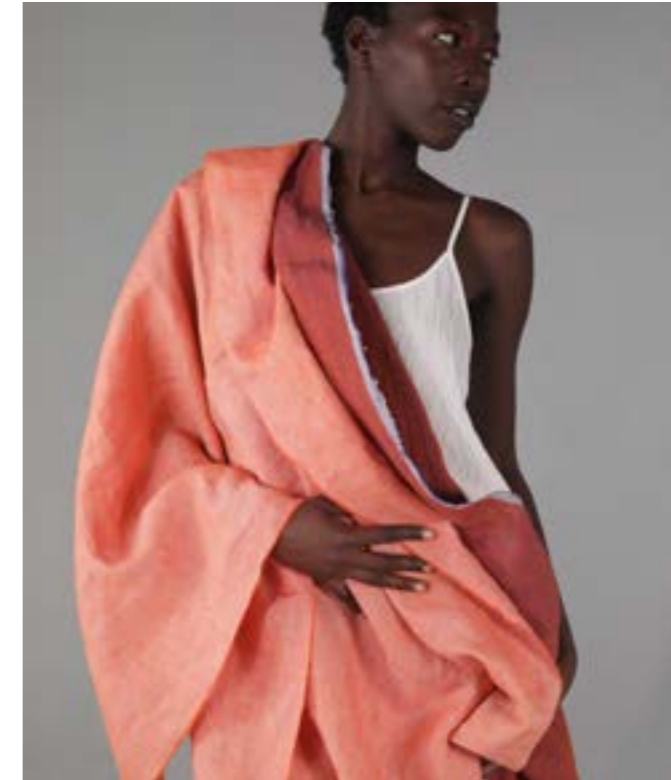
1 2

size 1: 60 cm wide 180 cm long

size 2: 90 cm wide 180 cm long

right: 63 apricot

bottom: 43 light denim



## OUR FASHION ICONS



### MINERAL COLORS

Mineral colours are made from iron oxides, the second most abundant element in the earth's crust. Toxic chemicals are completely avoided in the production process; the only solvent used is water.



### RECYCLING

When using polyester or nylon we prefer recycled over newly produced fiber. Recycled and regenerated nylon, made from old fishing nets, relieves the seas and their inhabitants. We also use recycled polyester for shipments.



### UPCYCLING

By using high-quality residues we utilize available resources, save them from piling up on waste mountains, spare the waters and reduce CO<sub>2</sub> emissions by about 80% (approximately 20 to 25% of the collections with around 3,500m of residue fabrics – with a rising tendency)



### FABRICS

The best solution we can find for every purpose: Recycled fishing nets, mulesing-free wool, recycled polyester, certified organic wool, organic cotton, Tencel® – recycled and upcycled fabrics.



### THE COOPERATION

with Jane Goodall is motivation and obligation to us. Her holistic approach and her appeal that everyone can contribute to making the world a better place has become a compass for our Slow fashion line – for humans, animals, and the environment.



### LASERPRINT

The chemical-free «negative» printing method is an environment-saving innovation that fascinates us. We experiment with it in many ways during our collection manufacturing process.



### PLANTDYING

Parts of our collection are dyed with plant colors. Innovation is one of the strengths of our strategy and leads us into change and the responsible use of every resource we employ in our work.



### OUR TRIPLE ECO SHIRTS

are a must-have. they are made from organic cotton, partially being dyed with organic colors and laser printed.



### FAIR WORK

Most of our collection is being made at our partner's production site which holds a BSCI certification of the highest category in Tunisia. All other production sites are located in Europe.



### TRANSPARENCY

From in-house design up to our two collections each year, responsibility and transparency are as seminal to us as are the observance of ecological and social standards, fair work conditions, and fair pay.



### GIVING BACK

We support Jane Goodall's worldwide projects for species and climate protection with 5€ from every distributed T-Shirt of our Jane Goodall Special Edition, plus an additional Euro from each item sold in Germany.



### TIERWOHL

We believe in controlled organic animal husbandry by following the guidelines for ecological farming – species-appropriate treatment in harmony with nature – no use of genetically modified plants or fattening aids.

## SHOWS

### AMSTERDAM

**Modefabriek**  
6th–7th July 2025

### BERN

**Showroom**  
**Il Momento Hotel**  
13th–14th July 2025

### WALLAU

**Innatex**  
19th–21st July 2025

### DÜSSELDORF

**Two Days**  
**Rheinterrassen**  
19th–21st July 2025

### LONDON

**Hammersmith**  
11th–31st July 2025

### MUNICH

**Supreme**  
2nd–5th August 2025

### PARIS

**Who's Next**  
**Showroom Hotel Oceania**  
6th–8th September 2025

### MADRID

**MOMAD**  
11th–13th September 2025

### NEW YORK

**The SHWRM**  
13th–15th September 2025

### MUNICH

**Showroom McAlpine**  
7th July–20th August  
2025

## SALES AGENTS

### WOMEN

#### GERMANY – AUSTRIA

**Oliver Wiesent**  
+49 170 5566717  
oliver.wiesent@t-online.de

#### SWITZERLAND

**Maike Friedlin**  
+49 172 5322229  
maike.friedlin@gmail.com

#### BENELUX – INTERNATIONAL

**Julia Wiesent**  
+49 89 55055815  
j.wiesent@elemente-  
clemente.de

#### FRANCE – SOUTH – EAST

**Showroom Initiales BB**  
**Frédéric & Birgit Balvet**  
+ 33 (0)6 828385 07  
+ 33 (0)6 1166 23 48  
ibb-bbalvet@orange.fr

#### FRANCE – NORTH – EAST

**Agence MPEK**  
**Maryska Paulet**  
+33 (0)6 07176873  
sarl.agence.mpek@gmail.com

#### FRANCE – NORTH – WEST

**Muriel Paigier**  
+33 (0)6 62041749  
paigier.muriel@yahoo.fr

#### ITALY

**EMME ERRE**  
**Mariella Rossi**  
+39 02 47711137  
+39 335 6061174  
info@showroomemmerre.it

#### SPAIN

**Oliver Wiesent**  
+49 170 5566717  
oliver.wiesent@t-online.de

#### Julia Wiesent

+49 89 55055815  
j.wiesent@elemente-  
clemente.de

#### UK – IRELAND

**Ariane Kaiser**  
+49 172 8197007  
ariane-kaiser@outlook.com

#### USA

**Maike Friedlin**  
+49 172 5322229  
maike.friedlin@gmail.com

### MEN

#### GERMANY – AUSTRIA – SWITZERLAND

**Showroom McAlpine**  
**Clemens Albrecht**  
Herzogstr. 50  
80803 Munich  
+49 89 38476388  
clemens@mc Alpine.de

#### INTERNATIONAL

**Maike Friedlin**  
+49 172 5322229  
maike.friedlin@gmail.com



elemente clemente Essential Clothing GmbH Velaskostr. 6a 85622 Feldkirchen  
Tel: +49 (0)89 550558-0 E-Mail: info@elemente-clemente.de